

## KAM Nozzles (to Cool Gases) KAML Type

---

### ► Features

- Atomizing by blower air (low-pressure air at air-water volume ratio of 250).
  - Light weight and compact design
  - Wide-area spraying.
- .....



### ► Applications

- Exhaust gas cooling in waste incineration plants and desuperheating tower.
- .....

### ► Materials

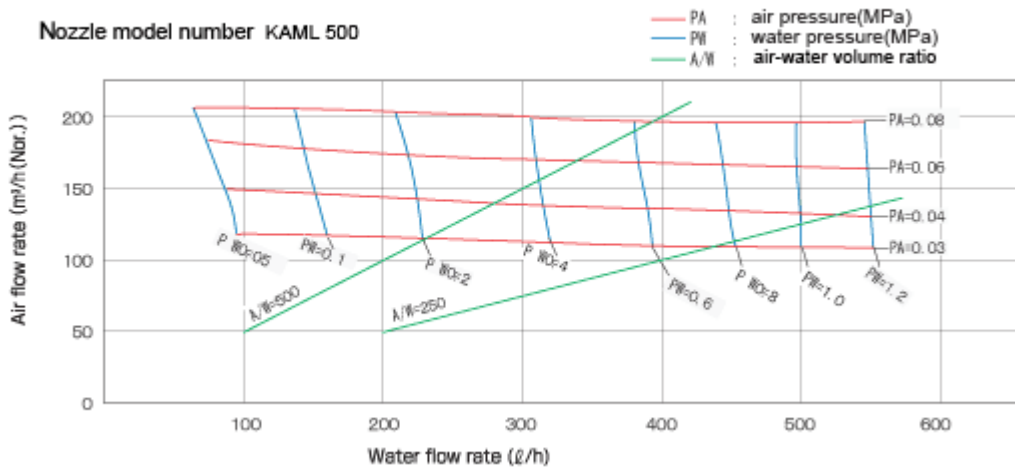
- Standard material: SUS316L (principal parts)
- .....

### ► Model

Connecting threads	1 1/4", 1/2"
Flow rate	90 □ 276 L/h (at 0.1MPa)
Spray angle	40°

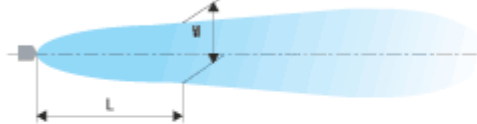
## Performance Data

### Characteristic curves

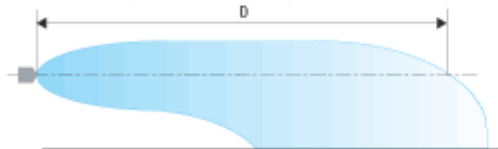


### Spray patterns

Nozzle model number KANL 500  
(Widthwise, view from top)



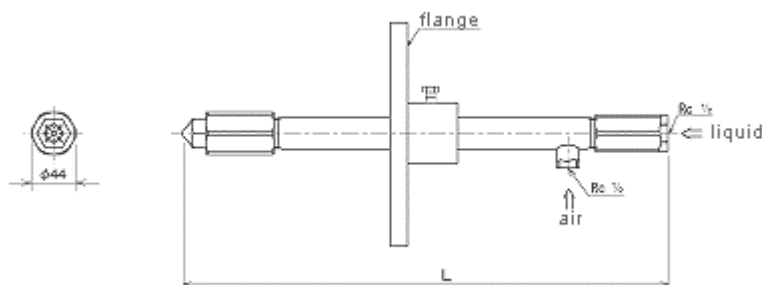
(Thicknesswise, view from side)



Air flow rate (m <sup>3</sup> /h (Nor.))	Water flow rate (ℓ/h)	Air-water volume ratio	Spray pattern value			
			D (mm)	W (mm) at L (mm)		
				1000	2000	3000
75	200	375	5500	450	600	700
75	100	750	5000	420	550	700
125	300	417	6000	470	650	750
125	100	1250	5500	450	600	700
150	400	375	6000	500	700	800
150	200	750	5500	450	650	750
250	600	417	6000	600	800	900
250	200	1250	6000	550	750	850

## Shapes and dimensions

### Straight type

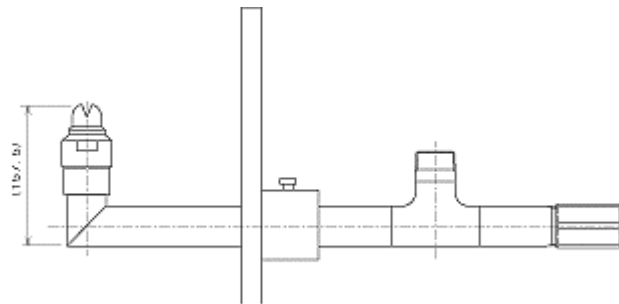


NPT thread is also available.

※ Dimension L and flange size are to be specified by the customer.

## Elbow type

---



NPT thread is also available.

※ Dimension L and flange size are to be specified by the customer.

---

### ■ Model and Model Number representing

KAML

500  
|  
Model number

