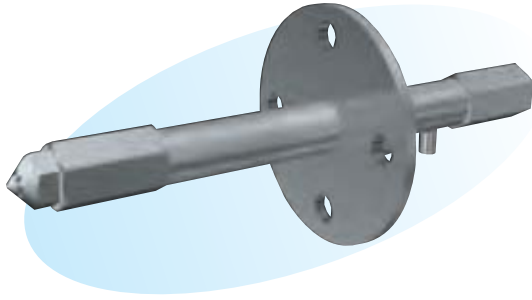


KAM Nozzle KAMX type



► Features

- Light weight and compact design.
- Spray angle capacity from 40° to 80°.
- Prevention of dust adhesion by reducing large droplets in the spray periphery even at a low air-water volume ratio.

► Applications

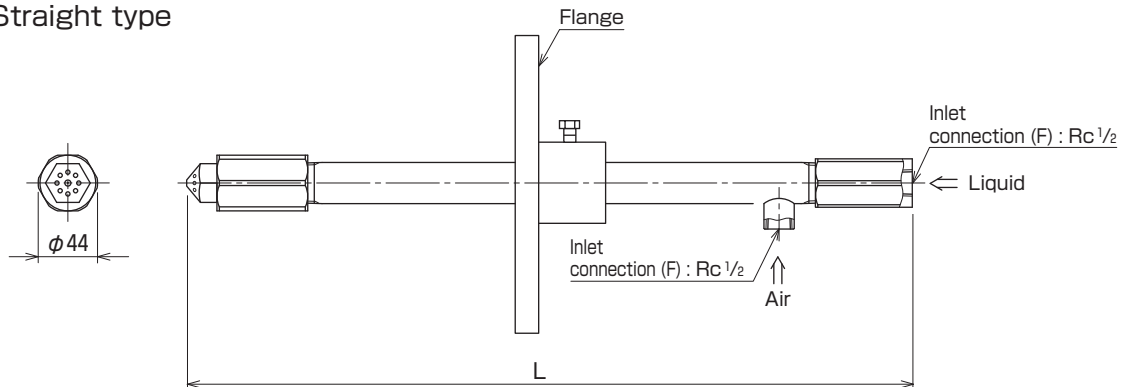
- Exhaust gas cooling in waste incineration plants and desuperheating tower.

► Material

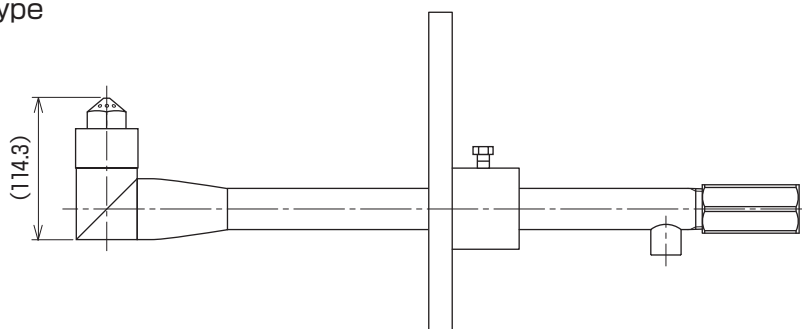
- Principal parts : 316L Stainless steel
- Other materials available upon request.

Shapes and dimensions

● Straight type



● Elbow type



* NPT thread is also available.
* Dimension L and flange size are to be specified by the customer.

● Model and Model Number representing

KAMX 500
Model number

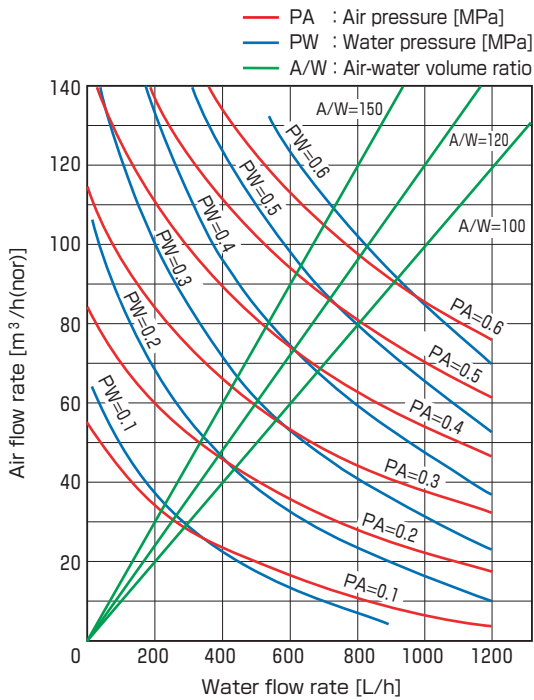
● Standard type model number list

Model	Model number	Min. orifice diameter for liquid [mm]	Air-water volume ratio	Water flow rate [L/h] at following water pressure [MPa]			
				0.2	0.3	0.4	0.5
KAMX	90	0.9	100	60	75	95	120
			150	50	65	75	100
			200	40	50	65	85
	220	1.5	100	140	190	220	260
			150	120	160	190	220
			200	100	130	150	190
	300	1.7	100	220	280	340	400
			150	170	220	270	310
			200	140	180	220	260
	400	1.9	100	310	400	480	580
			150	250	310	380	440
			200	200	260	320	370
	500	2.1	100	380	490	590	670
			150	310	380	470	540
			200	240	310	390	460
	600	2.3	100	440	560	680	800
			150	350	440	540	630
			200	280	380	460	530
	750	3.0	100	520	660	800	930
			150	410	520	630	720
			200	340	430	520	600
	1000	3.4	100	650	830	1010	1170
			150	500	650	780	920
			200	420	540	650	770

● Performance data

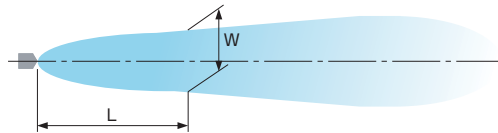
Characteristic curves

Nozzle model number KAMX 600

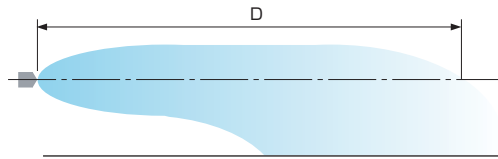


Spray patterns

Nozzle model number KAMX 600
(Widthwise, view from the top)



(Thicknesswise, view from the side)



Air pressure [MPa]	Water pressure [MPa]	Air flow rate [m³/h (nor)]	Water flow rate [L/h]	Air-water volume ratio	Spray pattern value [mm]			
					D	W at L		
					1000	2000	3000	
0.330	0.330	60	600	100	6000	650	850	950
0.480	0.460	90	600	150	6500	600	800	900
0.290	0.250	72	300	240	6000	600	800	900
0.220	0.180	72	150	480	5500	550	750	900